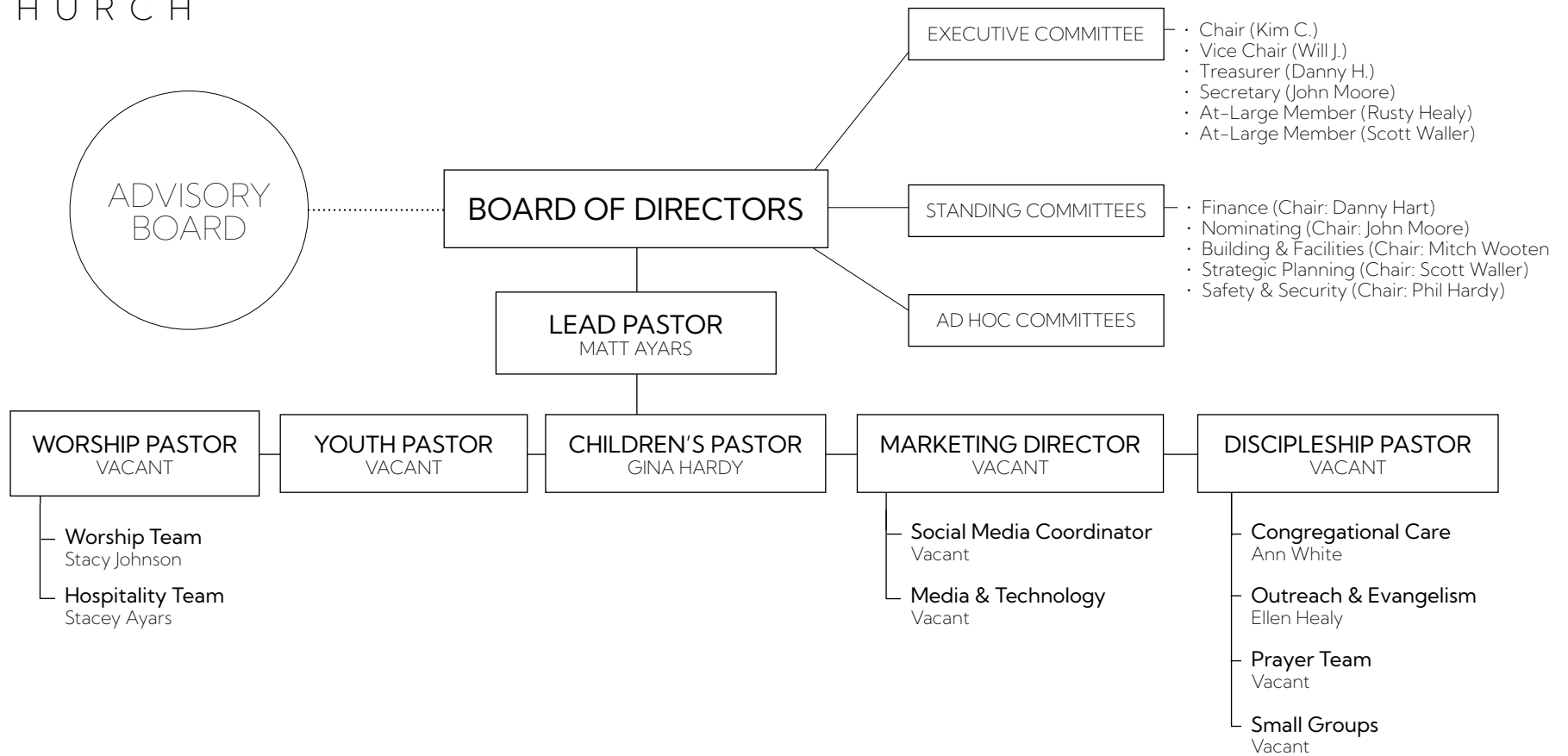


# WELLSPRING CHURCH

organizational chart



## MINISTRY TEAMS

- **Worship Team:** Responsible for planning and leading worship services, including musicians, vocalists, and technical support (sound, lights, and projection).
- **Children's Ministry Team:** Responsible for spiritual formation, education, and care of children through age-appropriate programs, classes, and events.
- **Youth Ministry Team:** Responsible for spiritual formation, education, and care of youth through age-appropriate programs, classes, and events.
- **Discipleship Team:** Facilitates the formation and growth of small groups or discipleship classes for deeper spiritual connection and community.
- **Outreach & Evangelism Team:** Coordinates efforts to reach out to the community, plan evangelistic events, and engage in local and global mission projects.
- **Hospitality Team:** Creates a welcoming environment for newcomers and members, overseeing greeters, ushers, and hospitality events.
- **Prayer Team:** Organizes and promotes prayer meetings, intercessory prayer, and prayer support for various needs.
- **Marketing & Communications Team:** Manages church communication channels, including website, social media, newsletters, and promotional materials